

Courtesy Of Shawn Moore-Lyons Of Greater Property Group

\$265,000 - 16922 109 Street, Edmonton

MLS® #E4430403

\$265,000

3 Bedroom, 1.50 Bathroom, 1,168 sqft
Condo / Townhouse on 0.00 Acres

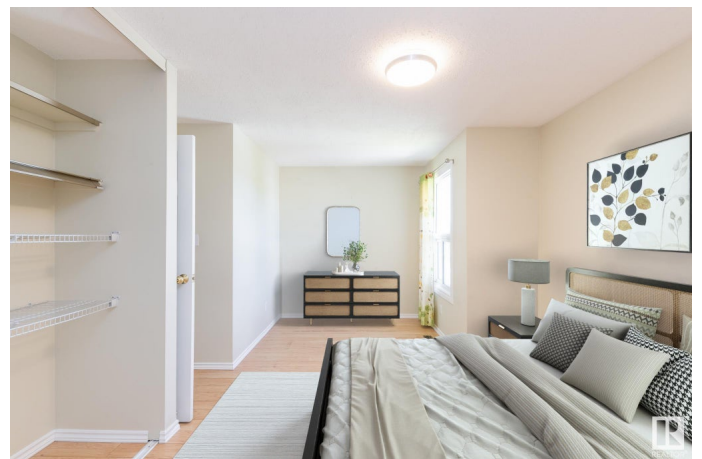
Baturyn, Edmonton, AB

Step into this bright and inviting 4-level split end-unit townhome in the family-friendly community of Baturyn. Backing onto a quiet green space, this home features a private fenced yard, a refreshed deck, and a lovely plum tree—perfect for relaxing outdoors. Inside, natural light fills every level through large vinyl windows. The entry level offers a welcoming foyer, a convenient 2-piece bath, garage access, and entry to the basement. Up a few steps, the spacious family room features vaulted ceilings and direct access to the backyard. The next level hosts a cozy dining area, a well-lit kitchen, and a front-facing balcony to enjoy your morning coffee. On the top floor, you'll find three comfortable bedrooms and a full 4-piece bathroom. The basement includes laundry, ample storage, and space to create a home office or playroom. Ideally located near parks, schools, shopping, and with easy access to Anthony Henday Drive, this home is move-in ready for its next chapter.

Built in 1976

Essential Information

MLS® #	E4430403
Price	\$265,000
Bedrooms	3



Bathrooms	1.50
Full Baths	1
Half Baths	1
Square Footage	1,168
Acres	0.00
Year Built	1976
Type	Condo / Townhouse
Sub-Type	Townhouse
Style	4 Level Split
Status	Active

Community Information

Address	16922 109 Street
Area	Edmonton
Subdivision	Baturyn
City	Edmonton
County	ALBERTA
Province	AB
Postal Code	T5X 2J3

Amenities

Amenities	Deck, Vaulted Ceiling, Vinyl Windows
Parking	Single Garage Attached

Interior

Appliances	Dryer, Garage Opener, Oven-Microwave, Refrigerator, Stove-Electric, Washer
Heating	Forced Air-1, Natural Gas
Stories	4
Has Basement	Yes
Basement	Full, Unfinished

Exterior

Exterior	Wood, Vinyl
Exterior Features	Backs Onto Park/Trees, Fenced, No Through Road, Public Transportation, Schools, Shopping Nearby
Roof	Asphalt Shingles
Construction	Wood, Vinyl
Foundation	Concrete Perimeter

Additional Information

Date Listed	April 11th, 2025
Days on Market	10
Zoning	Zone 27
Condo Fee	\$471

DATA IS DEEMED RELIABLE BUT IS NOT GUARANTEED ACCURATE BY THE REALTORS® ASSOCIATION OF EDMONTON. COPYRIGHT 2025 BY THE REALTORS® ASSOCIATION OF EDMONTON. ALL RIGHTS RESERVED. Trademarks are owned or controlled by the Canadian Real Estate Association (CREA) and identify real estate professionals who are members of CREA (REALTOR®, REALTORS®) and/or the quality of services they provide (MLS®, Multiple Listing Service®)

Listing information last updated on April 21st, 2025 at 11:02am MDT