

\$425,000 - 16210 86 Avenue, Edmonton

MLS® #E4429805

\$425,000

3 Bedroom, 2.00 Bathroom, 1,057 sqft

Single Family on 0.00 Acres

Elmwood, Edmonton, AB

Welcome to this beautifully upgraded character bungalow, ideally located in West Edmonton—just minutes from top-rated schools, WEM, a variety of shops & restaurants. Whether you're raising a family or looking for your forever home, this property offers comfort, functionality & lifestyle. The main floor features an open-concept layout with a chef's kitchen designed for both cooking & entertaining, complete with quality finishes & great flow. Enjoy the spacious primary suite, which combines two bedrooms into one, along with a second bedroom on the main level. Downstairs, discover the ultimate hangout space—featuring a cozy TV area, game room, stylish bar, wine cellar, additional bedroom & full bathroom—perfect for guests or extended family. Step outside to a large backyard with room for RV parking, extra cars, a hot tub & a covered patio. Yard is pre-wired for a 240V hot tub outlet. This home is move-in ready—an amazing opportunity combining comfort, value & a perfect location!

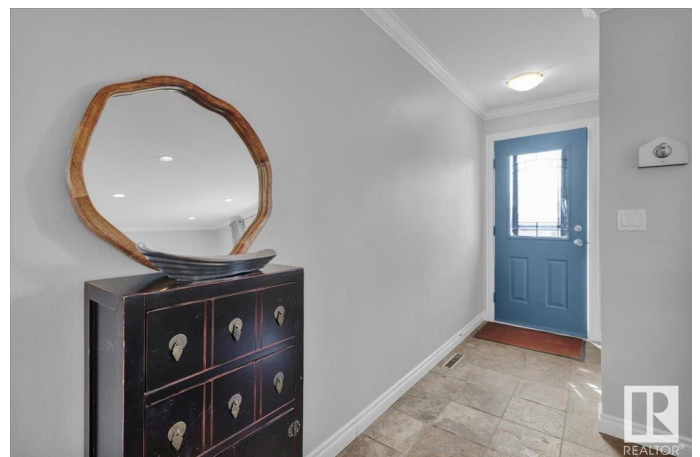
Built in 1964

Essential Information

MLS® # E4429805

Price \$425,000

Bedrooms 3



Bathrooms	2.00
Full Baths	2
Square Footage	1,057
Acres	0.00
Year Built	1964
Type	Single Family
Sub-Type	Detached Single Family
Style	Bungalow
Status	Active

Community Information

Address	16210 86 Avenue
Area	Edmonton
Subdivision	Elmwood
City	Edmonton
County	ALBERTA
Province	AB
Postal Code	T5R 4C7

Amenities

Amenities	Bar, Fire Pit, No Animal Home, No Smoking Home, Patio, Wet Bar
Parking Spaces	4
Parking	Single Garage Detached

Interior

Appliances	Dryer, Microwave Hood Fan, Refrigerator, Stove-Electric, Washer, Window Coverings, Dishwasher-Two
Heating	Forced Air-1, Natural Gas
Fireplace	Yes
Fireplaces	Corner
Stories	2
Has Basement	Yes
Basement	Full, Finished

Exterior

Exterior	Wood, Vinyl
Exterior Features	Back Lane, Fenced, Low Maintenance Landscape, Park/Reserve, Playground Nearby, Public Transportation, Schools, Shopping Nearby
Roof	Asphalt Shingles

Construction	Wood, Vinyl
Foundation	Concrete Perimeter

School Information

Elementary	Patricia Heights
Middle	Hillcrest
High	Jasper Place

Additional Information

Date Listed	April 9th, 2025
Days on Market	11
Zoning	Zone 22

DATA IS DEEMED RELIABLE BUT IS NOT GUARANTEED ACCURATE BY THE REALTORS® ASSOCIATION OF EDMONTON. COPYRIGHT 2025 BY THE REALTORS® ASSOCIATION OF EDMONTON. ALL RIGHTS RESERVED.Trademarks are owned or controlled by the Canadian Real Estate Association (CREA) and identify real estate professionals who are members of CREA (REALTOR®, REALTORS®) and/or the quality of services they provide (MLS®, Multiple Listing Service®)

Listing information last updated on April 20th, 2025 at 11:17am MDT