

## \$469,900 - 4716 150 Avenue, Edmonton

MLS® #E4429727

**\$469,900**

5 Bedroom, 3.00 Bathroom, 1,325 sqft

Single Family on 0.00 Acres

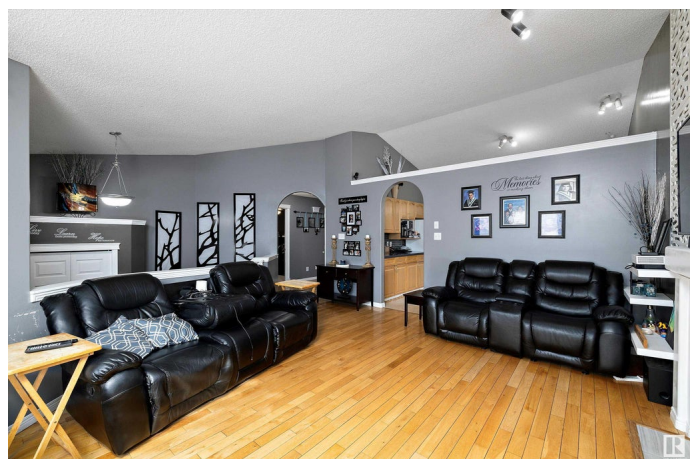
Miller, Edmonton, AB

4716 150 Ave â€” The Perfect Family Home! This beautifully maintained 4-bedroom, 3-bathroom home offers comfort, space, and functionality in every corner. Nestled on a quiet street, it boasts a large backyard that's perfect for kids, pets or summer gatherings â€” complete with a covered back patio for year-round enjoyment. Inside, you'll find a spacious basement, ideal for a family rec room, home gym, or additional living space. The main level is bright and inviting with plenty of room for entertaining, and the bedrooms are generously sized to accommodate the whole family. Whether you're hosting guests or enjoying a quiet evening at home, this property has everything you need. Located close to schools, parks, shopping, and transit, 4716 150 Ave offers the best of both convenience and community. Donâ€™t miss out â€” this one wonâ€™t last long!

Built in 2000

### Essential Information

|                |           |
|----------------|-----------|
| MLS® #         | E4429727  |
| Price          | \$469,900 |
| Bedrooms       | 5         |
| Bathrooms      | 3.00      |
| Full Baths     | 3         |
| Square Footage | 1,325     |



|            |                        |
|------------|------------------------|
| Acres      | 0.00                   |
| Year Built | 2000                   |
| Type       | Single Family          |
| Sub-Type   | Detached Single Family |
| Style      | Bi-Level               |
| Status     | Active                 |

### Community Information

|             |                 |
|-------------|-----------------|
| Address     | 4716 150 Avenue |
| Area        | Edmonton        |
| Subdivision | Miller          |
| City        | Edmonton        |
| County      | ALBERTA         |
| Province    | AB              |
| Postal Code | T5Y 2Z3         |

### Amenities

|           |                        |
|-----------|------------------------|
| Amenities | Deck                   |
| Parking   | Double Garage Attached |

### Interior

|                   |   |
|-------------------|---|
| Interior Features | ensuite bathroom  |
| Appliances        | Dishwasher-Built-In, Dryer, Garage Control, Garage Opener, Microwave Hood Fan, Refrigerator, Stove-Electric, Washer, Window Coverings |
| Heating           | Forced Air-1, Natural Gas   |
| Fireplace         | Yes   |
| Fireplaces        | Mantel, Tile Surround   |
| Stories           | 2   |
| Has Basement      | Yes   |
| Basement          | Full, Finished  |

### Exterior

|                   |  |
|-------------------|--|
| Exterior          | Wood, Brick, Vinyl   |
| Exterior Features | Fenced, No Back Lane, No Through Road, Playground Nearby, Schools, Shopping Nearby |
| Roof              | Asphalt Shingles   |
| Construction      | Wood, Brick, Vinyl   |
| Foundation        | Concrete Perimeter   |

### School Information

|            |                            |
|------------|----------------------------|
| Elementary | McLeod, St. Dominic        |
| Middle     | Steele Hghts, J. J. Bowlen |
| High       | ME Lazerte, Arch Oâ€™Leary |

**Additional Information**

|                |                 |
|----------------|-----------------|
| Date Listed    | April 8th, 2025 |
| Days on Market | 12              |
| Zoning         | Zone 02         |

DATA IS DEEMED RELIABLE BUT IS NOT GUARANTEED ACCURATE BY THE REALTORS® ASSOCIATION OF EDMONTON. COPYRIGHT 2025 BY THE REALTORS® ASSOCIATION OF EDMONTON. ALL RIGHTS RESERVED.Trademarks are owned or controlled by the Canadian Real Estate Association (CREA) and identify real estate professionals who are members of CREA (REALTOR®, REALTORS®) and/or the quality of services they provide (MLS®, Multiple Listing Service®)

Listing information last updated on April 20th, 2025 at 11:17am MDT