

# \$579,900 - 11 Ethan Place, St. Albert

MLS® #E4427951

**\$579,900**

5 Bedroom, 3.50 Bathroom, 2,050 sqft  
Single Family on 0.00 Acres

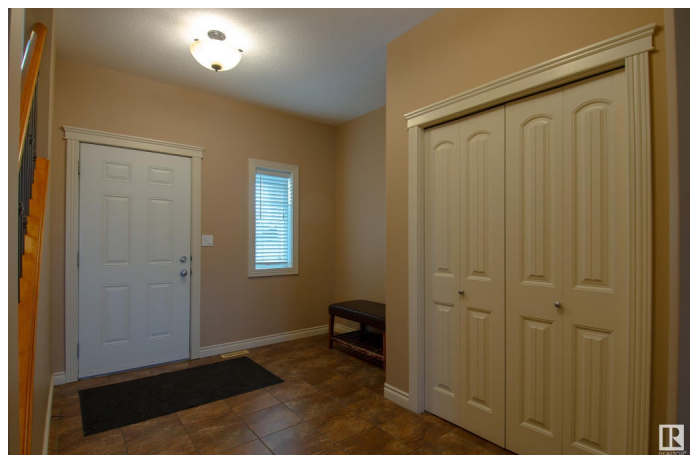
Erin Ridge, St. Albert, AB

Tucked into a quiet cul-de-sac, this spacious two-storey offers a thoughtful layout with four bedrooms upstairs and a fully finished basement with a fifth bedroom. The main floor features rich hardwood floors, 9ft high ceilings, and a cozy gas fireplace in the living area. The kitchen is designed for both function and style, with maple cabinetry, granite countertops, stainless steel appliances—including a gas stove—and a walk-in pantry. A bright and airy bonus room on the second floor sits alongside four generously sized bedrooms, while the primary suite includes a five-piece ensuite and walk-in closet. The basement provides additional living space with a large rec room, a fifth bedroom, a full bath, and rough-ins for a second kitchen and a second laundry room next to the furnace. A long driveway, insulated garage, and landscaped yard with a large deck complete the home. Located near schools, shopping, trails, and the Sturgeon Hospital, this is a well-connected yet peaceful place to call home.

Built in 2006

## Essential Information

|          |           |
|----------|-----------|
| MLS® #   | E4427951  |
| Price    | \$579,900 |
| Bedrooms | 5         |



|                |                        |
|----------------|------------------------|
| Bathrooms      | 3.50                   |
| Full Baths     | 3                      |
| Half Baths     | 1                      |
| Square Footage | 2,050                  |
| Acres          | 0.00                   |
| Year Built     | 2006                   |
| Type           | Single Family          |
| Sub-Type       | Detached Single Family |
| Style          | 2 Storey               |
| Status         | Active                 |

### **Community Information**

|             |                |
|-------------|----------------|
| Address     | 11 Ethan Place |
| Area        | St. Albert     |
| Subdivision | Erin Ridge     |
| City        | St. Albert     |
| County      | ALBERTA        |
| Province    | AB             |
| Postal Code | T8N 7L6        |

### **Amenities**

|                |                        |
|----------------|------------------------|
| Amenities      | Ceiling 9 ft.          |
| Parking Spaces | 4                      |
| Parking        | Double Garage Attached |

### **Interior**

|                   |   |
|-------------------|---|
| Interior Features | ensuite bathroom  |
| Appliances        | Dishwasher-Built-In, Dryer, Microwave Hood Fan, Refrigerator, Stove-Gas, Washer |
| Heating           | Forced Air-1, Natural Gas   |
| Fireplace         | Yes   |
| Fireplaces        | Mantel, Stone Facing  |
| Stories           | 3   |
| Has Basement      | Yes   |
| Basement          | Full, Finished  |

### **Exterior**

|                   |   |
|-------------------|---|
| Exterior          | Wood, Vinyl                                 |
| Exterior Features | Fenced, Flat Site, Schools, Shopping Nearby |

|              |                    |
|--------------|--------------------|
| Roof         | Asphalt Shingles   |
| Construction | Wood, Vinyl        |
| Foundation   | Concrete Perimeter |

### **Additional Information**

|             |                  |
|-------------|------------------|
| Date Listed | March 28th, 2025 |
|-------------|------------------|

|                |    |
|----------------|----|
| Days on Market | 14 |
|----------------|----|

|        |         |
|--------|---------|
| Zoning | Zone 24 |
|--------|---------|

DATA IS DEEMED RELIABLE BUT IS NOT GUARANTEED ACCURATE BY THE REALTORS® ASSOCIATION OF EDMONTON. COPYRIGHT 2025 BY THE REALTORS® ASSOCIATION OF EDMONTON. ALL RIGHTS RESERVED. Trademarks are owned or controlled by the Canadian Real Estate Association (CREA) and identify real estate professionals who are members of CREA (REALTOR®, REALTORS®) and/or the quality of services they provide (MLS®, Multiple Listing Service®)

Listing information last updated on April 11th, 2025 at 7:17am MDT