

Courtesy Of Jeff D Jackson Of Bode

\$361,900 - 10 710 Mattson Drive, Edmonton

MLS® #E4427533

\$361,900

3 Bedroom, 2.50 Bathroom, 1,286 sqft
Condo / Townhouse on 0.00 Acres

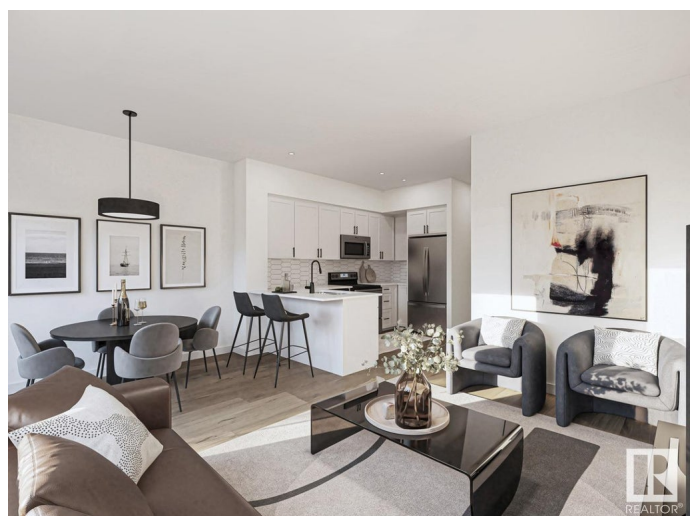
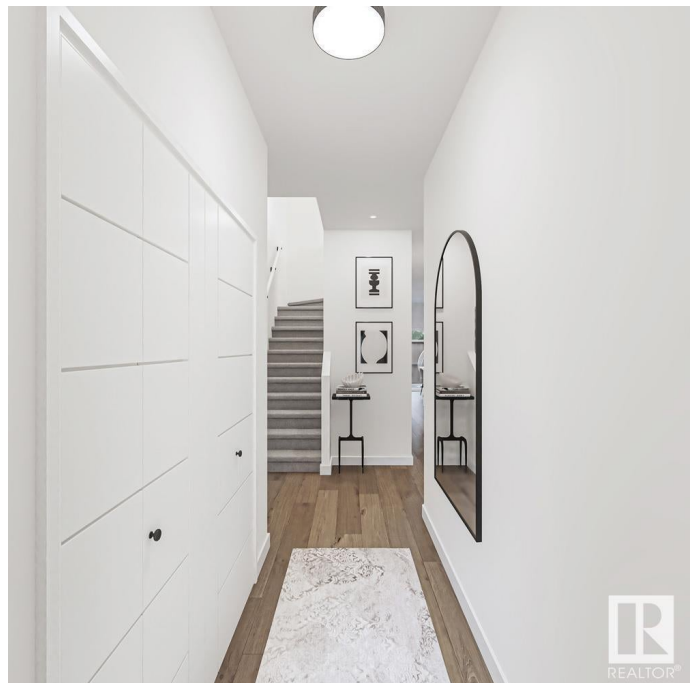
Mattson, Edmonton, AB

Boasting a single-attached garage and an option for potential future basement development, the Nova is perfectly poised for first-time home buyers, young professionals, and those who appreciate maximized, purposeful square footage. NOVA FEATURES: Coastal Contemporary Exterior Warm and Inviting Front Foyer Spacious Kitchen with a Flush Eating Bar Open-Concept Dining Nook + Living Room Cozy Loft + 3 Bedrooms Upstairs 3-piece Primary Ensuite + Walk-in Closet. Photos are representative.

Built in 2025

Essential Information

MLS® #	E4427533
Price	\$361,900
Bedrooms	3
Bathrooms	2.50
Full Baths	2
Half Baths	1
Square Footage	1,286
Acres	0.00
Year Built	2025
Type	Condo / Townhouse
Sub-Type	Townhouse
Style	2 Storey
Status	Active



Community Information

Address	10 710 Mattson Drive
Area	Edmonton
Subdivision	Mattson
City	Edmonton
County	ALBERTA
Province	AB
Postal Code	T6H 3H8

Amenities

Amenities	No Animal Home, No Smoking Home
Parking Spaces	1
Parking	Single Garage Attached

Interior

Interior Features	ensuite bathroom
Appliances	Hood Fan, Oven-Microwave
Heating	Forced Air-1, Natural Gas
Stories	2
Has Basement	Yes
Basement	Full, Unfinished

Exterior

Exterior	Wood, Fiber Cement, Vinyl
Exterior Features	Schools, Shopping Nearby
Roof	Asphalt Shingles
Construction	Wood, Fiber Cement, Vinyl
Foundation	Concrete Perimeter

Additional Information

Date Listed	March 26th, 2025
Days on Market	16
Zoning	Zone 53
Condo Fee	\$100

DATA IS DEEMED RELIABLE BUT IS NOT GUARANTEED ACCURATE BY THE REALTORS® ASSOCIATION OF EDMONTON. COPYRIGHT 2025 BY THE REALTORS® ASSOCIATION OF EDMONTON. ALL RIGHTS RESERVED. Trademarks are owned or controlled by the Canadian Real Estate Association (CREA) and identify real estate professionals who are members of CREA (REALTOR®, REALTORS®) and/or the quality of services they provide (MLS®, Multiple Listing Service®)

Listing information last updated on April 11th, 2025 at 7:47am MDT