

Courtesy Of Alan H Gee and Michelle P Chau Of RE/MAX Elite

# \$1,098,000 - 4503 Mead Court, Edmonton

MLS® #E4427131

**\$1,098,000**

4 Bedroom, 3.50 Bathroom, 2,900 sqft

Single Family on 0.00 Acres

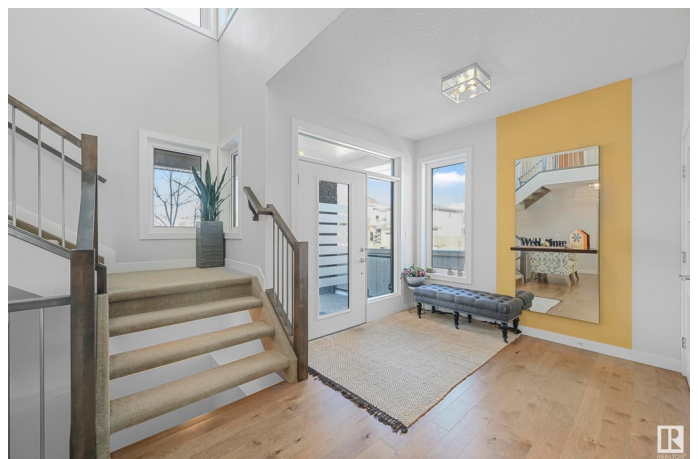
MacTaggart, Edmonton, AB

One of a kind, former Perry Signature showhome is steps to Ravine in prestigious Larch Park & within catchment of 6 schools. Approx 4200sf of total living with a well functioning layout. A sunny west facing foyer, 9' ceilings & gleaming hardwood welcomes you through an open floorplan complete w/an oversized great room, dual sided linear gas fireplace. Versatile flex room for home office/library or studio. Designer kitchen with upgraded cabinets, prep island, quartz countertops & plenty of storage space in the walkthrough pantry. Full dining nook will seat 10 & provides direct access to spacious yard for evening bbqs. Powder room, mudroom & access to heated, oversized garage complete this level. Upper level offers a generous sized bonus room with private balcony. Primary bedroom is complete with a dressing room & 5pc ensuite. 2 additional bedrooms & 4pc bathroom for a growing family. Lower level highlights multiple entertaining areas, 4th bedroom & 3pc bathroom. Certified Green built & upgraded throughout.

Built in 2014

## Essential Information

|        |             |
|--------|-------------|
| MLS® # | E4427131    |
| Price  | \$1,098,000 |



|                |                        |
|----------------|------------------------|
| Bedrooms       | 4                      |
| Bathrooms      | 3.50                   |
| Full Baths     | 3                      |
| Half Baths     | 1                      |
| Square Footage | 2,900                  |
| Acres          | 0.00                   |
| Year Built     | 2014                   |
| Type           | Single Family          |
| Sub-Type       | Detached Single Family |
| Style          | 2 Storey               |
| Status         | Active                 |

### **Community Information**

|             |                 |
|-------------|-----------------|
| Address     | 4503 Mead Court |
| Area        | Edmonton        |
| Subdivision | MacTaggart      |
| City        | Edmonton        |
| County      | ALBERTA         |
| Province    | AB              |
| Postal Code | T6R 0T2         |

### **Amenities**

|                |   |
|----------------|---|
| Amenities      | Air Conditioner, Ceiling 9 ft., Closet Organizers, Deck, No Animal Home, No Smoking Home, See Remarks |
| Parking Spaces | 4   |
| Parking        | Double Garage Attached  |

### **Interior**

|                   |  |
|-------------------|--|
| Interior Features | ensuite bathroom   |
| Appliances        | Dishwasher-Built-In, Dryer, Garage Control, Garage Opener, Hood Fan, Oven-Microwave, Refrigerator, Washer, Window Coverings, See Remarks |
| Heating           | Forced Air-1, Natural Gas  |
| Fireplace         | Yes  |
| Fireplaces        | Double Sided   |
| Stories           | 3  |
| Has Basement      | Yes  |
| Basement          | Full, Finished   |

### **Exterior**

|                   |   |
|-------------------|---|
| Exterior          | Wood, Stone, Stucco   |
| Exterior Features | Fenced, Landscaped, No Back Lane, Playground Nearby, Public Swimming Pool, Public Transportation, Schools, Shopping Nearby, See Remarks |
| Roof              | Asphalt Shingles  |
| Construction      | Wood, Stone, Stucco   |
| Foundation        | Concrete Perimeter  |

### **School Information**

|            |                            |
|------------|----------------------------|
| Elementary | Nellie Carlson/MonsignorWI |
| Middle     | Nellie Carlson/ArchJosephM |
| High       | Lillian Osborne            |

### **Additional Information**

|                |                  |
|----------------|------------------|
| Date Listed    | March 23rd, 2025 |
| Days on Market | 12               |
| Zoning         | Zone 14          |
| HOA Fees       | 236.25           |
| HOA Fees Freq. | Annually         |

DATA IS DEEMED RELIABLE BUT IS NOT GUARANTEED ACCURATE BY THE REALTORS® ASSOCIATION OF EDMONTON. COPYRIGHT 2025 BY THE REALTORS® ASSOCIATION OF EDMONTON. ALL RIGHTS RESERVED. Trademarks are owned or controlled by the Canadian Real Estate Association (CREA) and identify real estate professionals who are members of CREA (REALTOR®, REALTORS®) and/or the quality of services they provide (MLS®, Multiple Listing Service®)

Listing information last updated on April 4th, 2025 at 9:18am MDT