

# \$769,000 - 128 29 St, Edmonton

MLS® #E4427109

**\$769,000**

4 Bedroom, 4.00 Bathroom, 2,540 sqft

Single Family on 0.00 Acres

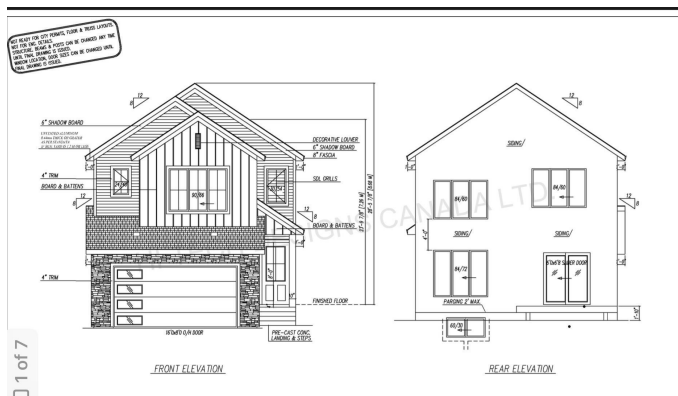
Alces, Edmonton, AB

Discover this remarkable 4-bedroom, 4-bathroom home, where every detail has been carefully crafted for modern living. The soaring open-to-above living room creates a striking focal point, offering a bright and airy space that's perfect for entertaining. The chef-inspired main kitchen, featuring sleek quartz countertops, blends beauty with functionality, while the dedicated spice kitchen ensures all your culinary needs are met. With generous living spaces and thoughtful design, this home is a true masterpiece in the coveted Alces community.

Built in 2025

## Essential Information

MLS® #	E4427109
Price	\$769,000
Bedrooms	4
Bathrooms	4.00
Full Baths	4
Square Footage	2,540
Acres	0.00
Year Built	2025
Type	Single Family
Sub-Type	Detached Single Family
Style	2 Storey
Status	Active



## Community Information

Address	128 29 St
Area	Edmonton
Subdivision	Alces
City	Edmonton
County	ALBERTA
Province	AB
Postal Code	T6X 1A7

## Amenities

Amenities	Ceiling 9 ft.
Parking	Double Garage Attached

## Interior

Interior Features	ensuite bathroom
Appliances	Garage Control, Hood Fan
Heating	Forced Air-1, Natural Gas
Stories	2
Has Basement	Yes
Basement	Full, Unfinished

## Exterior

Exterior	Wood, Stone, Vinyl
Exterior Features	Park/Reserve, Public Transportation, Stream/Pond
Roof	Asphalt Shingles
Construction	Wood, Stone, Vinyl
Foundation	Concrete Perimeter

## Additional Information

Date Listed	March 23rd, 2025
Days on Market	20
Zoning	Zone 53

DATA IS DEEMED RELIABLE BUT IS NOT GUARANTEED ACCURATE BY THE REALTORS® ASSOCIATION OF EDMONTON. COPYRIGHT 2025 BY THE REALTORS® ASSOCIATION OF EDMONTON. ALL RIGHTS RESERVED. Trademarks are owned or controlled by the Canadian Real Estate Association (CREA) and identify real estate professionals who are members of CREA (REALTOR®, REALTORS®) and/or the quality of services they provide (MLS®, Multiple Listing Service®)

Listing information last updated on April 12th, 2025 at 12:32pm MDT