

# \$130,000 - 217 610 Calahoo Road, Spruce Grove

MLS® #E4426033

**\$130,000**

1 Bedroom, 1.00 Bathroom, 363 sqft  
Condo / Townhouse on 0.00 Acres

City Centre, Spruce Grove, AB

Why settle for a cookie-cutter hotel when you can have a stylish, pint-sized palace of your own? This fully furnished, turnkey condo is practically begging for an owner—ideally, someone who’s always on the move, a jet-setting professional, a dedicated student, or a couple in need of a cozy crash pad in Spruce Grove. Think of it as your personal retreat—without the front desk drama or those questionable hotel carpets. This cleverly designed space offers the best of both worlds: room to entertain when you’re feeling social and a wall bed ready to transform the place into a snug haven when it’s time to recharge. Bonus perks? A private balcony for grilling, a sun-soaked corner unit with windows galore, and an on-site gym to keep you feeling your best. Plus, you’re within walking distance of Spruce Grove’s trail system, shops and restaurants, because convenience is key, and so is never running out of snacks.

Built in 2016

## Essential Information

MLS® #	E4426033
Price	\$130,000
Bedrooms	1
Bathrooms	1.00
Full Baths	1



Square Footage	363
Acres	0.00
Year Built	2016
Type	Condo / Townhouse
Sub-Type	Lowrise Apartment
Style	Single Level Apartment
Status	Active

### **Community Information**

Address	217 610 Calahoo Road
Area	Spruce Grove
Subdivision	City Centre
City	Spruce Grove
County	ALBERTA
Province	AB
Postal Code	T7X 2A7

### **Amenities**

Amenities	Closet Organizers, Deck, Detectors Smoke, Exercise Room, No Animal Home, No Smoking Home, Parking-Visitor, Vaulted Ceiling
Parking	Stall

### **Interior**

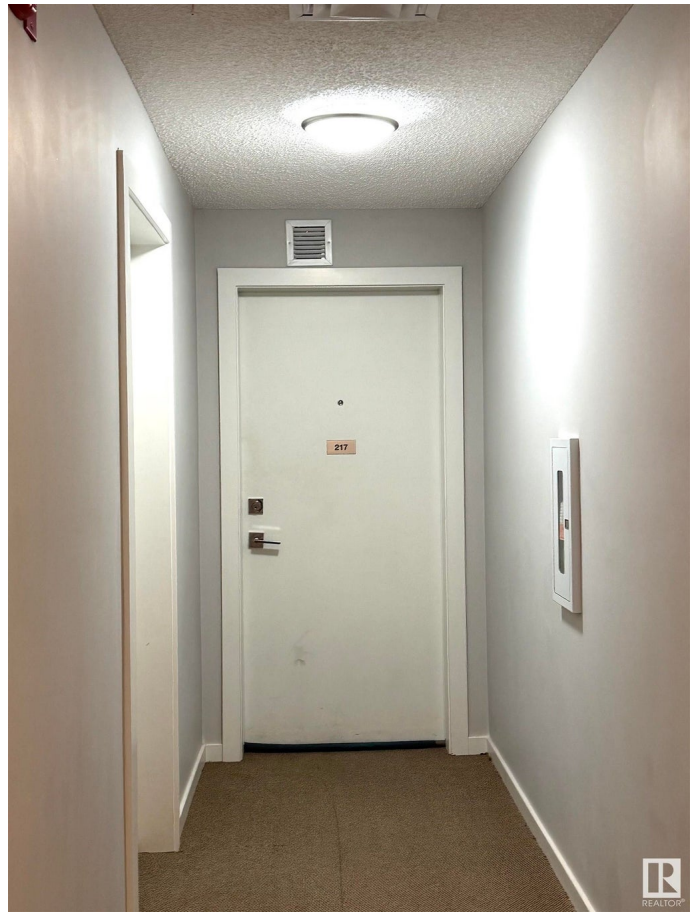
Appliances	Dishwasher-Built-In, Microwave Hood Fan, Stacked Washer/Dryer, Stove-Electric
Heating	Baseboard, Electric
# of Stories	4
Stories	1
Has Basement	Yes
Basement	None, No Basement

### **Exterior**

Exterior	Wood, Metal, Vinyl
Exterior Features	Flat Site, Golf Nearby, Landscaped, Playground Nearby, Private Setting, Schools, Shopping Nearby, View City
Roof	Asphalt Shingles
Construction	Wood, Metal, Vinyl
Foundation	Concrete Perimeter

### **Additional Information**

Date Listed March 15th, 2025  
Days on Market 25  
Zoning Zone 91  
Condo Fee \$234



DATA IS DEEMED RELIABLE BUT IS NOT GUARANTEED ACCURATE BY THE REALTORS® ASSOCIATION OF EDMONTON. COPYRIGHT 2025 BY THE REALTORS® ASSOCIATION OF EDMONTON. ALL RIGHTS RESERVED. Trademarks are owned or controlled by the Canadian Real Estate Association (CREA) and identify real estate professionals who are members of CREA (REALTOR®, REALTORS®) and/or the quality of services they provide (MLS®, Multiple Listing Service®)

Listing information last updated on April 8th, 2025 at 11:17pm MDT