

# \$589,555 - 18929 99a Avenue, Edmonton

MLS® #E4420429

**\$589,555**

9 Bedroom, 4.00 Bathroom, 4,146 sqft  
Single Family on 0.00 Acres

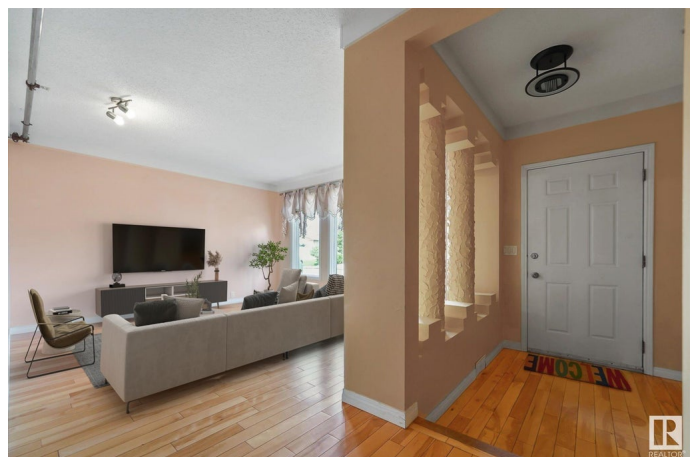
La Perle, Edmonton, AB

9 Bedroom Home with an ELEVATOR inside!!  
Less than 5 mins to WEST EDMONTON MALL & 9 mins to Misericordia Hospital! This MASSIVE home offers almost 4,600 sqft of fully finished living space (including the fully finished basement). Located in a well-established neighborhood, and close proximity to schools, park, shopping and public transit, this home is perfect for a growing family or running a homecare business. Featuring 9 bedrooms, 4 large bathrooms designed for special needs (wheelchair accessible), 2 spacious living rooms, a sunroom, 2 utility rooms, a large attic, a den, & an elevator to access the second floor, this property is ideal for multigenerational living. Tons of money has been spent on the sprinkler system, and revamping the home to run a certified business. Fully fenced yard, and if you have a bigger truck or SUV, you have a double-oversized attached garage, plus a huge driveway for RV storage. Amazing location, great price, don't miss the opportunity to make this home yours!

Built in 1982

## Essential Information

MLS® #	E4420429
Price	\$589,555



Bedrooms	9
Bathrooms	4.00
Full Baths	4
Square Footage	4,146
Acres	0.00
Year Built	1982
Type	Single Family
Sub-Type	Detached Single Family
Style	2 Storey
Status	Active

### **Community Information**

Address	18929 99a Avenue
Area	Edmonton
Subdivision	La Perle
City	Edmonton
County	ALBERTA
Province	AB
Postal Code	T5T 3M9

### **Amenities**

Amenities	Sunroom
Parking Spaces	4
Parking	Double Garage Attached

### **Interior**

Appliances	See Remarks
Heating	Forced Air-1, Natural Gas
Fireplace	Yes
Fireplaces	Mantel
Stories	4
Has Basement	Yes
Basement	Full, Finished

### **Exterior**

Exterior	Wood, Stucco
Exterior Features	Fenced, Flat Site, Landscaped, Playground Nearby, Public Transportation, Schools, Shopping Nearby
Roof	Asphalt Shingles

Construction Wood, Stucco  
Foundation Concrete Perimeter

### **Additional Information**

Date Listed February 5th, 2025  
Days on Market 67  
Zoning Zone 20

DATA IS DEEMED RELIABLE BUT IS NOT GUARANTEED ACCURATE BY THE REALTORS® ASSOCIATION OF EDMONTON. COPYRIGHT 2025 BY THE REALTORS® ASSOCIATION OF EDMONTON. ALL RIGHTS RESERVED. Trademarks are owned or controlled by the Canadian Real Estate Association (CREA) and identify real estate professionals who are members of CREA (REALTOR®, REALTORS®) and/or the quality of services they provide (MLS®, Multiple Listing Service®)

Listing information last updated on April 13th, 2025 at 12:32pm MDT